

The Bulletin



The British Society of Australian Philately
Founded 1933



HMS Vulcan at Garden Island Sydney, watercolour by Frederic Garling

CONTENTS.

SYDNEY VIEW COVER CARRIED BY HMS VULCAN by Andrew Mortlock (1681) with additional information provided by Brian Peace (395).....	1
UNUSUAL CACHETS further information	4
POSTED AT RAILWAY SIDINGS by K.A.L. Killeen (1465) continued.....	5
THE MODERN SCENE with Sel Pfeffer.....	16
QUERY 743. PHOTOGRAPHIC ESSAYS – WHO DID THEM AND FOR WHAT REASON from Peter Clarkson (629).....	18
QUERY 742. NSW ILLUSTRATED LETTERSHEET by Patrick Reid (1112).....	19
ADELAIDE CENSOR MARKS – NEW DISCOVERIES by Neil Russell (352), Dee Pullan (1208) and Albert Coles (721).....	20
NEW EARLIEST DATE FOR TASMANINA 20 CENTIMES TAX MARK by Patrick Reid (1112).	22
H.F.A. AGAIN! from Dee Pullan (1208), part 1 and Colin Salt (1269) part 2.....	23
WEB-SITE OF INTEREST	24
BOB'S CORNER PAGE No 23	25

In November 1852 'Vulcan' arrived in Sydney with a detachment of officers and men of the 40th Regiment of Foot (the 2nd Somersetshire Regiment). Earlier the 'Vulcan' had docked in Melbourne but had been detained in quarantine and was unable to land her passengers, despite having the necessary health certificates and there being no smallpox on board. This tour for the 40th Regiment was its second in Australia and the Regiment was the one that experienced more action in Australia than any other. In 1853 the Regiment was detailed to be mounted escorts to the gold shipments sent from the diggings to Melbourne. In December 1853 the Regiment took part in the battle at the Eureka Stockade at Ballarat, providing both storming parties and mounted troops.

Having established that HMS Vulcan had been in Sydney during November 1852 and had had a marginal involvement in the Eureka Stockade, I was delighted to find that there is a picture of the ship moored in Sydney harbour. The watercolour is by Frederick Garling and shows her at anchor with Garden Island in the background. The picture was last on sale in 2004 and it is reproduced on a number of publically accessible websites; it is shown below.¹



HMS Vulcan at Garden Island Sydney, watercolour by Frederic Garling

Brian Peace confirmed that mail was carried by warships but that such covers are scarce and he had not previously seen a cover carried on this vessel. From 1852 contracts existed for the regular carriage of mail and Brian estimates that 'at least 99.9% of letters were sent on these contract vessels or by private sailing vessels'.

Brian also provided links to the National Library of Australia's on-line listing of contemporary newspapers; amongst a number of entries relating to the ship the following are of note :

Sydney Morning Herald, 11 November 1852 : *NOVEMBER 10.- H.M.S. Vulcan, 9 guns, Commander E.P.B. Von Donop, from Melbourne 5th instant. Passengers -*

5. MELROSE

Location 32.50 S. 137.35 E - 22 K SSE of WILMINGTON, on WILMINGTON- HAMLEY BRIDGE railway.

- (A) Manuscript endorsement POSTED MELROSE RLY. STATION on letter addressed to ADELAIDE with machine cancel on arrival ADELAIDE / 4.30 am / 17 Nov / 1943 / SOUTH AUST. Presumably put into the letter receiver at the station.

See appendix fig. 15

Carried to HAMLEY BRIDGE where transferred to the BROKEN HILL - ADELAIDE line.

Offered at TORSTEN WELLER auction 15 June 2011 - sold A\$ 60

- (B)

**POSTED AT MELROSE
RAILWAY STATION**

Fragment of envelope with handstamp in violet and stamp cancelled with datestamp MELROSE / 3 Je 53 / S.A. Probably addressed for local delivery or elsewhere not requiring transit via ADELAIDE - hence not put on the train but taken to the local P.O. directly.

See appendix fig. 16

- (C)

POSTED AT MELROSE RAILWAY STATION

Fragment of envelope with handstamp in violet, and stamps cancelled with date-stamp ADELAIDE / 29 Se 55 / S.A

See appendix fig. 17

This item and the previous one (B) were offered in a mixed lot of S.A. covers at PRESTIGE PHILATELY auction on 6 Aug. 2011 - est. A\$ 400 – unsold

**6. HALLETT. POSTED HALLETT RAILWAY
STATION LETTER RECEIVER**

A number of covers and pieces are known with this handstamp in black or violet - in use about three years c. 1956.

Location 33.24 S. 138.54 E. - 30 K S of TEROWIE on BROKEN HILL to ADELAIDE line.

See appendix fig. 18

7. CARRIETON.

(A) **POSTED CARRIETON RLY**

THE MODERN SCENE

**A Focus on Framas, Reprints, Booklets and other Modern Material
with Sel Pfeffer – email – slpfeffer@bigpond.com**

(This edited version is reprinted from Stamp News by kind permission of the publisher.)

APTA's MELBOURNE STAMP SHOW 12th – 13th November held for the first time in Box Hill's lower Town Hall went off well with the room full of stamp and coin dealers, most of whom seemed to be doing reasonable business. The APTA dinner on Saturday night was fairly informal and the annual auction of special numbers and the odd printer's trial took place with some spirited bidding. Yours truly was successful with a few nice number 001's.

STITCHED BOOKLETS – I feel sure that most serious collectors of Australian booklets would agree with me that the stitched (with advertisement) booklets from 5d Blue QEII – Ed 1960 up to 7c Prime Ministers in 1973 are the most interesting and challenging that Australia Post have produced. I recently purchased a poorly described bulk lot at auction that caused a few disappointments so imagine my pleasure in finding two gems – one a stapled 60c Famous Australians B136AeS, the other was a new advertising sequence in the QEII red heleon paper booklet B100Ai. A few days after my discovery a customer, Stuart W advised he had a new 5c Prime Ministers advertising sequence – B132Ci (similar to B132Ce) but with the adverts on the first insert page reversed. Not long ago Mark W found B71, edition DN9 with what looked like B71Df except that the third advert was 66b whereas all previous adverts seen and recorded were 66a. This small difference would make the booklet B71Dj.

SPECIAL LIMITED EDITION AAT MACQUARIE IS. MINISHEET OVERPRINT –

A number of attractive souvenirs were produced by members of the Lawson's Hut Foundation. These souvenirs commemorate the recovery and conservation of the Wireless Masts used by the 1911-14 Australian Antarctic Expedition on Macquarie Island. The recovery took place during April 2011 by members from the Hut's Foundation with the Tasmanian Parks and Wildlife Service. One of the limited edition miniature sheets is illustrated below.



50th ANNIVERSARY – WORLD WILDLIFE FUND - Post produced four miniature sheets for Australia, AAT, Christmas Is. and Cocos Is. Collectors are experiencing difficulty

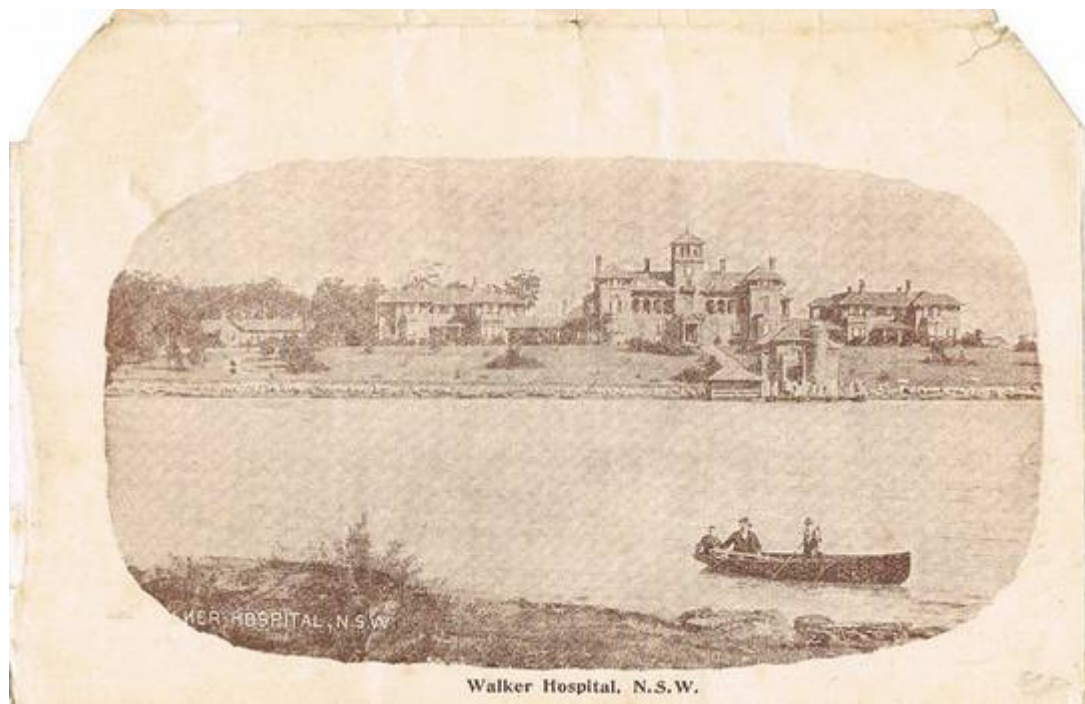


Fig 2a.

A quick search on Google identified it as the 'Thomas Walker Hospital, Concord West, NSW 2138' and the main building looks much the same. It is about halfway between Sydney and Parramatta. The Hospital was designed by Sir John Sulman in the Federation Free Classical style.

My philatelic query relates to the lettersheet. I have not seen one before, but I have not been looking. It is privately produced, but there is no information as to publisher on it. Has anyone else seen one of these with a different illustration? How many different designs were there? Or was it privately produced for the use of Hospital residents and their families?

Any further information will be welcomed. Please respond via the BULLETIN Editor.

Editors Note. It was necessary to reduce Fig 2 to approximately 60% of the actual size but Fig 2a is correct.

2432. ADELAIDE CENSOR MARKS – NEW DISCOVERIES.

Compiled by the Editor from material supplied by Neil Russell (352), Dee Pullan (1208) and Albert Coles (721).

John Little's book *British Empire Civil Censorship Devices, World War II, Australia, New Zealand and Pacific Islands* lists on page 60, CCSG type H4-3, boxed A censor marks Nos. 3 – 49 and No. 60.

Recently covers showing A71 (feint) and A76 have come to light and are illustrated below. The first two showing A71 are from Riverton (19 Apr 1943) and Peterborough (24 May 1943) whilst the third shows a strike of A76 and is from North Adelaide posted (7 Apr 1943).

Neil Russell comments that he discussed the matter a long time ago with John Little and someone in Australia (Phil Collas?) and the following conclusion was reached. Each censor had an allocated number cachet which only he/she used. When these little rubber stamps

There is a ½d Pictorial on the face of the card (Fig. 2) which has been cancelled on 1 SE 1911.



Fig. 2

This is a new earliest date of usage by around 3 years. It is interesting that the Postal authorities in Tasmania recognised the stamp, as there had been a policy of treating stamps on the face of the card as invalid until around 1908. The Postage Due was collected in Lyon by two 10 centime Postage Due stamps.

2431. H.F.A. AGAIN! From Dee Pullan (1208), part 1 and Colin Salt (1269), part 2.

Part 1.

Another **H.F.A.** surfaces, it's use not conforming, to the best of my knowledge, to any previously recorded.



The letter was posted with a 2½d stamp, 1d underpaid for surface mail to the U.S.A. It is clearly machine cancelled twice on the 8th June, 1949. (This is the earliest recorded date of use I have in my collection – others reading this may have earlier?)