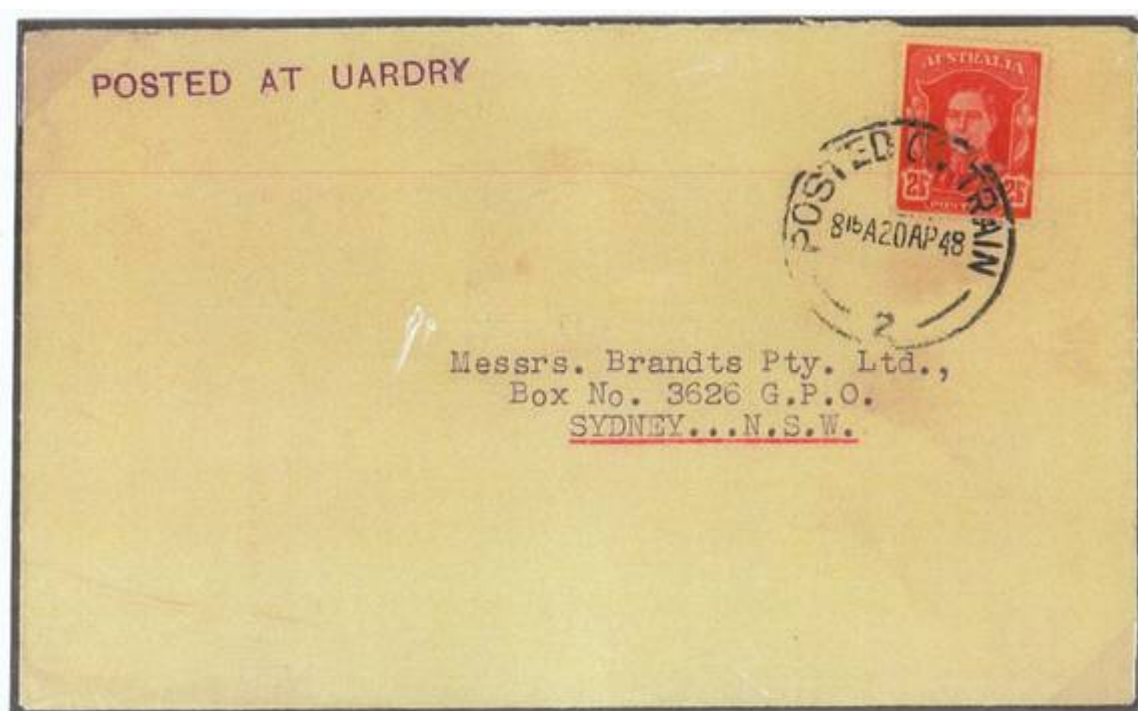


The Bulletin



The British Society of Australian Philately
Founded 1933



CONTENTS.

WESTERN AUSTRALIA CONVICT STAMPS by Brian J Burch.....	103
KING GEORGE V 1½d DIE 1 – 16R17. By Don Landers (1112).....	105
POSTED AT RAILWAYS SIDINGS by K.A.L. KILLEEN (1465).....	106
THE MODERN SCENE with Sel Pfeffer.....	113
CORRECTIONS.....	116
FOUR NEW CLICHÉS ON ELECTRO 4A OF 2d ORANGE KGV FOUND, AND UCV B2 PLATED AS 4AR31. By Richard Guy (1616) and Don Landers (1027).....	117
QUERY 739. KGV 1d RED ISSUE DATE from Keld Jess (943).....	120
QUERY 740. DATE OF N.S.W. T.P.O. MARK from John Booker (1012).....	121
BOB'S CORNER PAGE No 21.....	122
CONTINUING RESEARCH ON THE KGV 1d VARIETIES. By Bert Wajer, Gordon Monk and Paul Kaigg (1717) Part 17.....	124
PREVIOUSLY UNRECORDED WESTERN AUSTRALIA TAX HANDSTAMP by Patrick Reid (1112).....	127
UNUSUAL CACHETS (6) conducted by the Editor.....	128

for the purpose of identification, may be with propriety included in collections as varieties, under the designation of 'convict mail'.

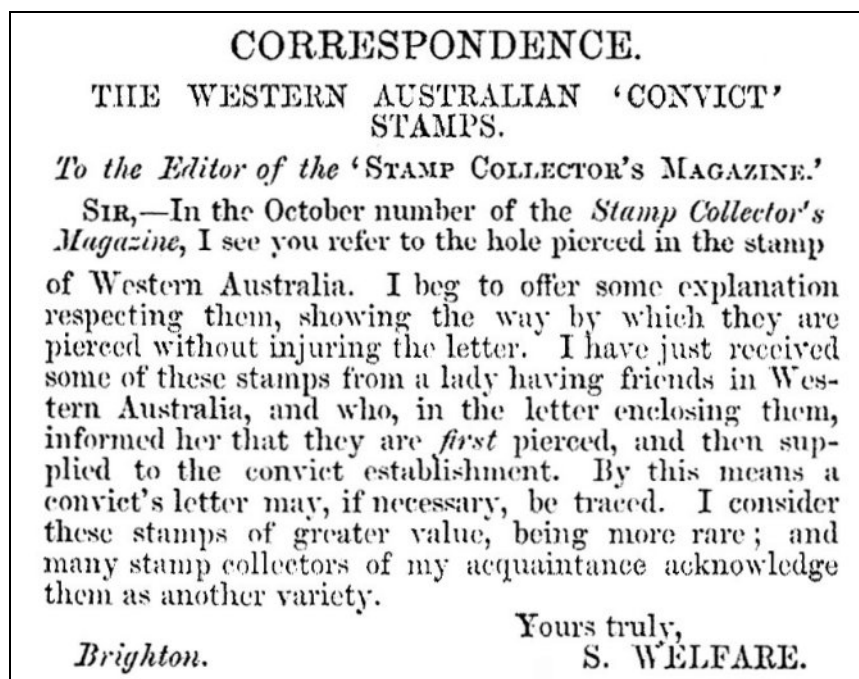


Figure 2.

All of this goes to show that not only did the early dealers and stamp collectors (for at his early date, the word *philately* had not yet been coined) understand the purpose of these "perfins" at the very outset of the hobby but that they were importing them in bulk in subsequent years. It begs the question – Where have all of these holey stamps gone?

Note

Figure 1 was taken from a posting on www.stampboards.net by Glen Stephens a well-known Australian dealer. (www.glenstephens.com)

References

1. **Theodor Buhl:** *Recollections of 20 years' stamp dealing.*, The Philatelic Journal of Great Britain, May 1900, Volume 10, Issue 5, pp.80-81; June, Issue 6, pp.100-102; July, Issue 7, pp.114-115; August, Issue 8, pp.130-131; September, Issue 9, pp.151-153; October, Issue 10, pp.172-173 & November, Issue 11, pp.188-190.
2. **[Charles W. Viner]:** *Stamps newly issued, or first described.*, The Stamp Collector's Magazine, October 1863, Volume 1, Issue 9, pp.140-141.
3. **S. Welfare:** *The Western Australia 'convict' stamps.*, The Stamp Collector's Magazine, November 1863, Volume 1, Issue 10, pp.157-158.
4. **Charles W. Viner:** *Addenda to Mount Brown's Catalogue of Postage Stamps, comprising notes, additions and emendations.*, The Stamp Collector's Magazine, December 1863, Volume 1, Issue 11, pp.175-176.

See Appendix Fig. 3.

An oval rubber stamp “POSTED / AT/ BRINGAGEE” was recorded in use in 1945 (see R. Tobin’s original article).

There was a P.O. at BRINGAGEE until 1914, and an R.O. was in operation c. 1921/22 only.

B. CONNECTION TO T.P.O.2 WEST – (to 1917) ORANGE to WALLERAWANG and (after 1917) ORANGE TO DUBBO.

THE BYROCK/BREWARRINA BRANCH LINE.

NERANGHI.

Posted at “NERANGHI” Unattended Siding.

Rubber stamp in violet on letter, stamp datestamped T.P.O. 2 WEST / 18 AU 55 UP / NSW – AUST (Peck 2W).

Location 30.09S 146.49E. – 21K SSW of BREWARRINA.

See Appendix Fig. 4.

C. CONNETION TO T.P.O. 1 WEST – (to 1917) WALLERAWANG to SYDNEY and (after 1917) ORANGE TO SYDNEY.

BROGANS CREEK.

Posted at Brogans Creek

Handstamp in violet, on piece. Stamp datestamped T.P.O. 1 WEST / 25 JY 40 DN / 1 / NSW – AUST (Peck IW20). Location 32.58S 149.55E. – 54K due N of WALLERAWANG.

See Appendix 5.

This item was put on the ordinary train from GULGONG – MUDGEE – KANDOS – WALLERAWANG, where transferred to the T.P.O.

D. CONNECTION TO T.P.O. FORBES LINE.

DERRAWONG SIDING.

Postcard with address given as DERRAWONG SIDING, via BOGAN GATE. Stamp datestamped T.P.O. FORBES LINE / 21 JL 14 / N.S.W. Location 33.05S 147.19EE. 16K E of CONDOBOLIN on the CONDOBOLIN – PARKES branch line.

See appendix Fig. 6.

Carried by ordinary train to PARKES where transferred to the T.P.O.

for the games – also a miniature sheet which utilised the 3 x 27c stamps only. This miniature sheet was overprinted for the ANPEX exhibition and also for the Australian Stamp Promotion Council who overprinted a considerable number as a fund-raiser for their organization. The Australian mascot for the games was a giant motorised Kangaroo called Matilda and by a happy co-incidence the Australian Stamp promotion Council overprint featured Matilda on its overprint. I had purchased a fair number and after a few days of the seven day show all dealers had sold out and the official, who held the balance of the stock had just left the building to fly back home when I realised that no one had any stock left. I left the stand in the hands of my helpers and got in my car and drove to the airport where I was able to order a few hundred more of the “Matilda” overprint which was to come up next day by Ansett Airlines. Most of the stock sold and I was able to make many new contacts. The overprinted “Matilda” sheet and the Anpex sheet is illustrated.



Flaw descriptions of the new clichés on right pane of electro 4A.

37(z) Lower right corner: A small horizontal compartment line 1.5mm in length, in two parts, lies 0.5mm below the bottom frame, and extends just beyond the right frame.



38(z) Top right corner: A small compartment line, sloping up to the left at 45 degrees, and 0.25mm long, with an orange dot beneath its bottom point, is found 0.5mm from the top right corner.



(z) Top left corner: A thick prominent line is found 2.0mm above the top frame level with the left frame, and 2.0mm long. It is cut in half on this example by a perforation hole, and could be one of the many examples of these common compartment lines found under the lower left corner. (i.e. It is more likely known as existing under the left lower corner of the stamp above, i.e. R32).



43(z) Over top frame and over top right corner: Compartment lines are found 0.75mm over the top frame starting 2.00mm to the right of the crown top, measuring 2.00mm long (could be in two pieces). Also, above the top right corner, there are two orange dots or small lines. The first is 0.5mm above the top frame, 0.25mm long and level with the right frame. Next piece is sloping down to the right and just below the one first mentioned. Together they appear to curve around the top right corner. (Part of the extensive postmarking is at this position making it difficult to be sure of the length of these lines).



45(z) Top right corner: An "inverted L" shaped line is found with sides about 1mm in length 0.75mm above the top frame, and just 0.25mm out from right frame. There is a small dot below this inverted L.



There is no sign of the flaw (a) on this cliché at time of its printing. See 2d book (1).

4th State June 1928 - Final SECOND SUBSTITUTED CLICHÉ

3a to 3h the unit showing these flaws and the adjoining units, 35 and 40, were removed and new units inserted.

- 4a **Shading Lines.** Thinner than normal, except for top line left and right of the crown and over the left wattles. The thinner lines are most pronounced under the RVS.
- 4b **Frame Corners.** All corners pointed.
- 4c **Cross.** More white in the cross than normal.



4a, 4b, 4c

2423. PREVIOUSLY UNRECORDED WESTERN AUSTRALIA TAX HANDSTAMP by Patrick Reid (1112)

The cover illustrated below (Fig. 1) shows a previously unrecorded WA Tax handstamp. It is somewhat crude in appearance, but was undoubtedly introduced to cater for the common 1d deficiency when the exchange rate for underpaid overseas mail became 1d = $6\frac{2}{3}$ centimes. The handstamp measures 26 x 18 mm. Note that the seriffed 'T' is a separate handstamp. This may have been a short-lived handstamp, as the cover is dated 10 Feb 1947, and a boxed handstamp of the same value has been recorded dated 19 Apr 1947 (Ref. 1). Although the exchange rate change was introduced in 1941, wartime priorities may have meant that a new handstamp was fairly low on the priority list.

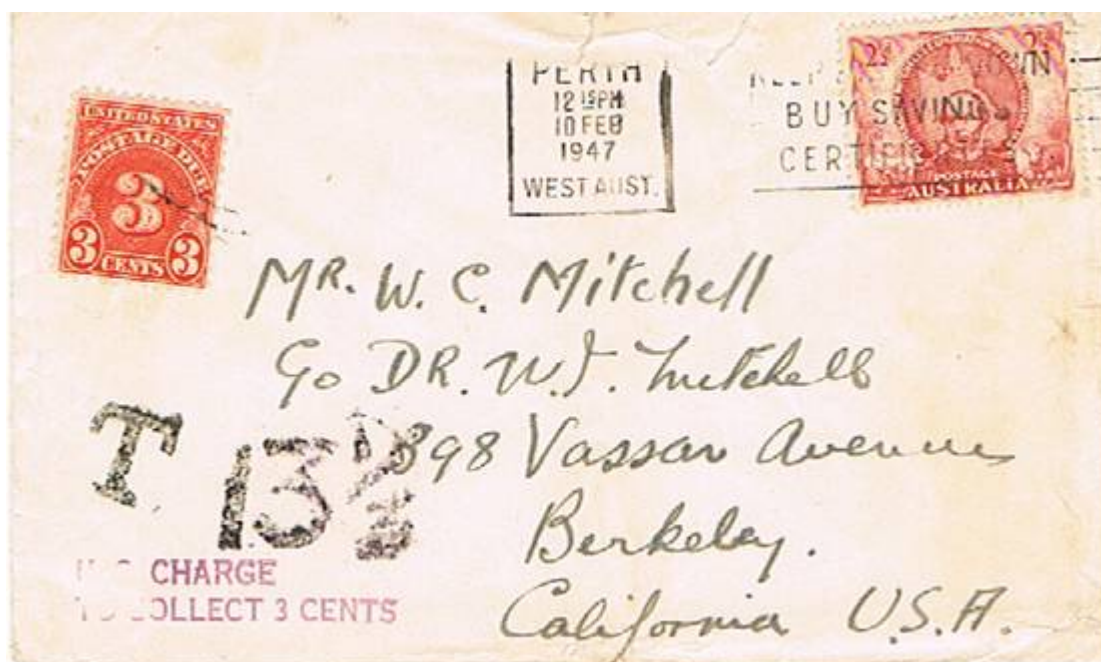


Fig. 1